

For immediate release
January, 2026



LEGENDS

ATHLETICISM IN ASIAN/AMERICAN ART

A Godwin-Ternbach Museum Exhibition, *LEGENDS: Athleticism in Asian/American Art*, explores the intersection of art and sports through the work of contemporary Asian and Asian American artists, February 10 – May 14, 2026, Queens College Campus.



Kaarina Chu Mackenzie, *Center*, 2025

MEDIA CONTACT:

Godwin-Ternbach Museum: Louise Weinberg, Co-Director and Curator,
louise.weinberg@qc.cuny.edu, 718.997.4736

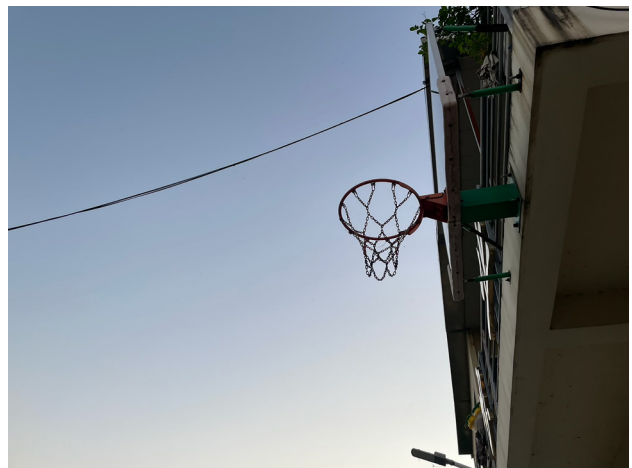
The Godwin-Ternbach Museum at Queens College (CUNY), is pleased to present *LEGENDS: Athleticism in Asian/American Art*, which will open with a reception on February 10, 2026, from 6pm to 8pm. The exhibition is free and open to the public from February 10 – May 14, 2026. Hours are 10am to 4pm, Monday through Thursdays, and two Saturdays per month 11am to 4pm. Check the website at www.gtmuseum.org for dates.

LEGENDS: Athleticism in Asian/American Art is a Queens College School of Arts initiative generously funded by the Thomas Chen Family/Crystal Windows Endowment. The Chen Family funds, on a rotating basis, a triennial program including a GTM exhibition, student scholarships, and a visiting artist grant. *LEGENDS* is the second iteration of that series at GTM.

Exploring the intersection of art and sports through the work of contemporary Asian and Asian American artists, the exhibition will debut installations by The Chinatown Basketball Club and Astria Suparak, along with a new painting by Kaarina Chu Mackenzie. Additional artists represented include: Lanna Apisukh, Christopher Chan, Jamie Chan, Maia Chao, Edward Cheng, Caroline Garcia, Jocelyn Hu, Alison Kuo, Andrew Kuo, Dustin Lin, Paul Pfeiffer, Kenneth Tam, Sixing Xu, and Johann Yamin.



Lanna Apisukh, *Bikes*, 2021



Allen Cao, *CBC Poster*

While often considered distinct fields, this exhibition highlights how sport and artistic expression serve as interconnected arenas. *LEGENDS* examines how artists of Asian descent engage with the shared language of art and sport to reflect identity, nationalism, gender, the body, spectatorship, and performance. This exhibition features artists and collectives across a wide range of artistic media — including painting, installation, fashion, and video — to conceptually illustrate these topics.

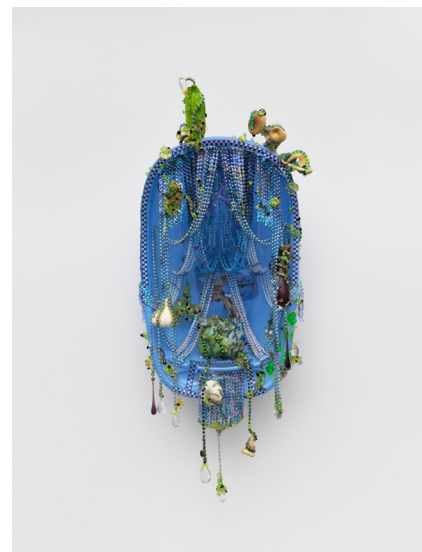
This exhibition emerges at a moment of growing artistic interest in athletics. However, *LEGENDS* is the first exhibition to specifically focus on the relationship between art and sports within contemporary Asian and Asian American art.

The global reach of sports provides a compelling framework for examining Asian and Asian American identities amidst rising nationalisms and anti-Asian sentiments. In the U.S., stereotypes surrounding Asian and Asian American athletes continue to limit visibility and inclusion in sports, even as American leagues like the National Basketball Association (NBA) thrive financially by engaging with Asian markets. As noted by Astria Suparak and Brett Kashmere: “Sports are used for political purposes all the time at different scales and offer an important site of struggle that goes unrecognized and underreported.”

LEGENDS considers how artworks that adopt the language of sport can challenge essentialist narratives, instead emphasizing individual artistic voices and the diverse, transnational concerns that shape contemporary Asian and Asian American art today.

Programs in conjunction with the exhibition are open to students and the public. *LEGENDS: Athleticism in Asian/American Art*, has been curated by Jayne Cole Southard, art historian and lecturer at The City College of New York. The exhibition is presented in collaboration with GTM co-directors, Louise Weinberg and Maria Pio.

LEGENDS: Athleticism in Asian/American Art is a Queens College School of Arts initiative funded by The Thomas Chen Family/Crystal Windows Endowment. Additional support is provided by the Milton & Sally Avery Arts Foundation, Kupferberg Center for the Arts, and Queens College, CUNY. This exhibition is supported, in part, by public funds from the NYC Department of Cultural Affairs in partnership with the NY City Council.



Alison Kuo, *Grocery Basket Gradient*, 2019



Godwin-Ternbach Museum, Queens College, CUNY
65-30 Kissena Blvd., 405 Klapper, Flushing, NY 11367
Telephone 718-997-4724 Fax 718-997-4734
www.gtmuseum.org

SOCIAL MEDIA

Please tag us in your social media posts!

Instagram: [@gtmuseum](https://www.instagram.com/gtmuseum)

Facebook: www.facebook.com/godwin.ternbach

Queens College School of Arts: [@queenscollegesoa](https://www.instagram.com/queenscollegesoa)

For exhibition information and publicity images, please contact Louise Weinberg, louise.weinberg@qc.cuny.edu.

For education and public programs, please contact Maria Pio, maria.pio@qc.cuny.edu.



About the Godwin-Ternbach Museum

The Godwin-Ternbach Museum, a part of Queens College's Kupferberg Center for the Visual and Performing Arts, presents contemporary and historical exhibitions and programs that provide exciting educational opportunities and aesthetic experiences to the college community and residents of Queens, Manhattan, and Long Island. As the only museum in the CUNY system, and the only encyclopedic collection of art and artifacts in the borough housing over 7,000 global objects that date from ancient to modern times, the museum introduces visitors to works they might not otherwise encounter. Virtual and in-person programs complement and interpret the art on view to serve the needs and interests of local and international communities. All exhibitions and programs are free.



About Thomas Chen

Entrepreneur Thomas Chen is a true American success story. Speaking no English and with little money, he immigrated from rural Taiwan to the US in 1982 and worked several menial jobs. Soon however, his drive and ambition led him in 1990 to launch his own very modest manufacturing company, Crystal Window & Door Systems in Queens. Through his hard work and leadership, the company grew, expanded numerous times, and prospered. Today as Chairman, Thomas continues to lead the Crystal family of companies, providing vision and strategic guidance. His business acumen and accomplishments have been spotlighted over the years by national business publications, television news shows, and industry media and organizations. Thomas remains a strong and prominent role model in the Asian-American business community.

About Crystal Window and Door Systems

Crystal Window & Door Systems has grown from 10 employees in a small Queens commercial garage to one of the top window and door manufacturers in North America. Crystal has nearly one million square feet of production space at five major facilities in New York, Chicago, St. Louis, Riverside (CA), and Scranton (PA). The company produces over 500,000 vinyl and aluminum products annually with a workforce of 750 employees across the country. Thomas' son Steve, President of Crystal, has now taken the reins of the national organization, and directs daily operations.

Chen Family Philanthropy

Early on in his business career, Thomas believed it was important to share the fruits of his company's success with the community and established The Crystal Foundation for his charitable activities. The Chen Family is supportive of many not-for-profit organizations, with an emphasis primarily on celebrating and preserving Asian culture and art, and educational initiatives for immigrants to the US. Thomas is a founding member of the Taiwanese American Arts Council, which collaborates with the Queens Museum, and supports Asian artists for exhibits there and throughout New York City.

With a love of both art and nature, Thomas established Crystal Park, a 200-acre property in Dutchess County, NY, that is a private outdoor art park and nature preserve. Crystal Park sponsors local and international contemporary artists and exhibits their works along wooded trails for guests and local visitors to enjoy. The latest installation at Crystal Park is a life-size bronze statue in honor of former Queens Borough President Claire Shulman, a long-time mentor and friend to Thomas, Steve, and Crystal Windows.